

## 2 Clos Bodrhyddan Rhyl LL18 4FG

Offers In Region Of £340,000

🛏 4 🍳 1 🛋 2

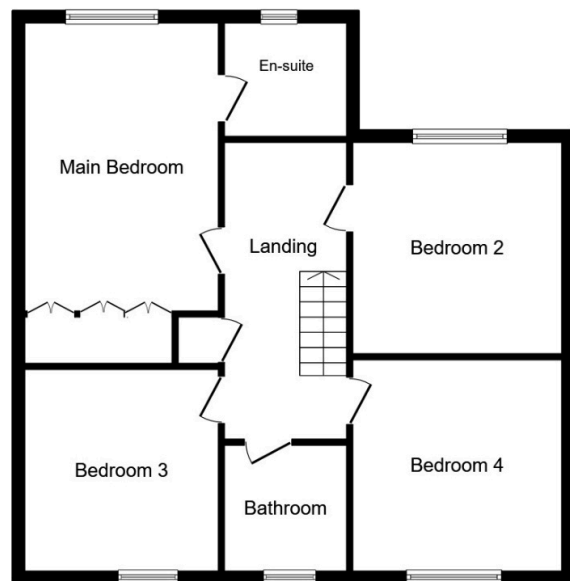


This beautifully presented four double bed roomed detached family home offers accommodation suited to the family occupier, with a large lounge, kitchen/diner for modern family living and large enclosed rear garden. The property is situated on the popular and sought after Aberkinsey Development and is within easy reach of the town of Rhyl with its shops and public amenities and there are also good links to the A55 expressway for travel to Chester and beyond. Schools catering for all age groups are a short distance away and the property is ideally situated for countryside walks.

- Detached family home
- Contemporary style kitchen/living room
- Garage
- Ample off street parking
- EPC rating- B
- Four double bedrooms
- En-suite facility
- Large private rear garden
- Kitchen/Diner
- Freehold



**Ground Floor**



**First Floor**

Total floor area 152.0 sq.m. (1,636 sq.ft.) approx

This floor plan is for illustration purposes only and may not be representative of the property. The position and size of doors, windows and other features are approximate. Unauthorized reproduction prohibited. © PropertyBOX